



The IronRidge (rail based) Roof Mount System is a reliable, comprehensive and feature rich photovoltaic mounting solution. Anchored by IronRidge Standard or IronRidge Light rails, our Roof Mount platform includes every component necessary for supporting virtually any commercial or residential roof mount installation, regardless of roof type or pitch. With this system, you will leave behind a professional installation, everytime, backed by a 20 year manufacturing warranty on every IronRidge part.

## Key Features

Longest Spans In The Industry Means Fewest Required Attachment Points

Fewest Attachment Points Reduce Total Installed Costs And Liability

Unique Curved Profile Of The Standard Rail Increases Strength And Enhances Aesthetic Design

Fully Integrated with the IronRidge Design Assistant™

Backed By Industry Leading Warranty 10 yr. Limited Product, 3 yr. Finish

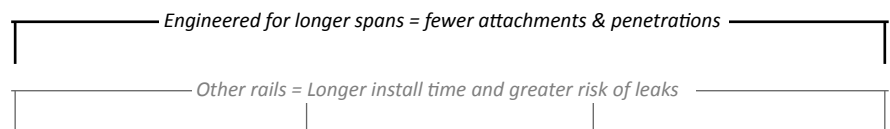
PE Certified For Most States

Universal Clamping Components Work With Most Solar Module Brands

Versatile Design Allows For Use In Ground Mount, Roof Mount, or Large Array Applications

Best Customer Service And Support

### IronRidge Standard Rails Less Material, Faster Install, Minimized Risk of Leaks



#### IronRidge Standard Rail

- Engineered profile allows for spans over 13'
- Cantilever can be 40% of span length
- Attractive structural design, ideal for residential and commercial applications



#### IronRidge Light Rail

- Light, cost effective rail system supports spans up to 8'
- Cantilever can be 40% of span length



#### Splices (Internal)

- Can be installed at same location as an attachment
- Does not require additional attachments to support the splice



Maximum Span Chart:		IronRidge Standard Rail								IronRidge Light Rail					
Wind Speed	Snow Loads		0 psf	10 psf	20 psf	30 psf	40 psf	50 psf	60 psf	70 psf	0 psf	10 psf	20 psf	30 psf	40 psf
	90 mph	100 mph													
90 mph	147"	123"	103"	94"	83"	75"	69"	64"	88"	75"	63"	59"	52"		
100 mph	147"	123"	103"	94"	83"	75"	69"	64"	88"	75"	63"	59"	52"		
110 mph	147"	123"	103"	94"	83"	75"	69"	64"	88"	75"	63"	59"	52"		
120 mph	147"	123"	103"	94"	83"	75"	69"	64"	88"	75"	63"	59"	52"		
130 mph	138"	123"	103"	94"	83"	75"	69"	64"	81"	75"	63"	59"	52"		
140 mph	129"	120"	101"	94"	83"	75"	69"	64"	75"	73"	62"	58"	52"		
150 mph	120"	117"	99"	93"	83"	75"	69"	64"	70"	70"	61"	57"	52"		

Roof Zone 1, Flush Mount Only  
 Slope = 6" / ft.  
 Exposure category B  
 Module length: 77"

Building mean roof height = 30'  
 Clearance between roof and rail: 2"  
 End Cant Span: 40% (adj. interior span)  
 Middle 1/3 span rail splice not permitted

\* For more information visit [www.ironridge.com](http://www.ironridge.com) to download certification letters, installation guides, and to use our roof mount configuration software.

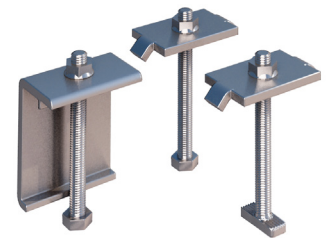
### Attachments

- Adjustable L feet (4 pack kits)
- Adjustable tilt leg kits (5° to 45°)
- Flush mount aluminum standoffs (3", 4", 6", 7")
- Tilt mount aluminum standoffs (3.75", 7", 9")



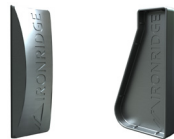
### Clamps

- Panel Sizes 1.22" to 2.30"
- Mid clamps (require only 1/4" between panels)
- Mid clamps available in hex or t-bolt
- All hardware stainless steel



### End Caps

Protect against debris while providing a finished look for both standard and light rails



### Wire Clips

Accommodate up to eight 6mm panel wires or an Enphase wire harness



## Why IronRidge?



**Experience** - Designing/manufacturing solar mounting products since 1996

**Single Source** - Roof mounts, ballasted mounts, ground and pole mounts; *a solution for your specific application*

**Customer Satisfaction** - Customer service and technical support to help you succeed

For product and purchasing inquiries contact:

**ecoDIRECT**

CLEAN ENERGY SOLUTIONS  
[www.ecodirect.com](http://www.ecodirect.com)

On-line Resources Available:

- Online Design Assistant™
- 360 Interactive Environments
- Engineering Design Guides
- Product Certifications
- Installation Guides
- Reseller Locator



**Sales: 800-227-9523**  
[sales@ironridge.com](mailto:sales@ironridge.com)

[www.IronRidge.com](http://www.IronRidge.com)  
 1435 Baechtel Road  
 Willits, CA 95490