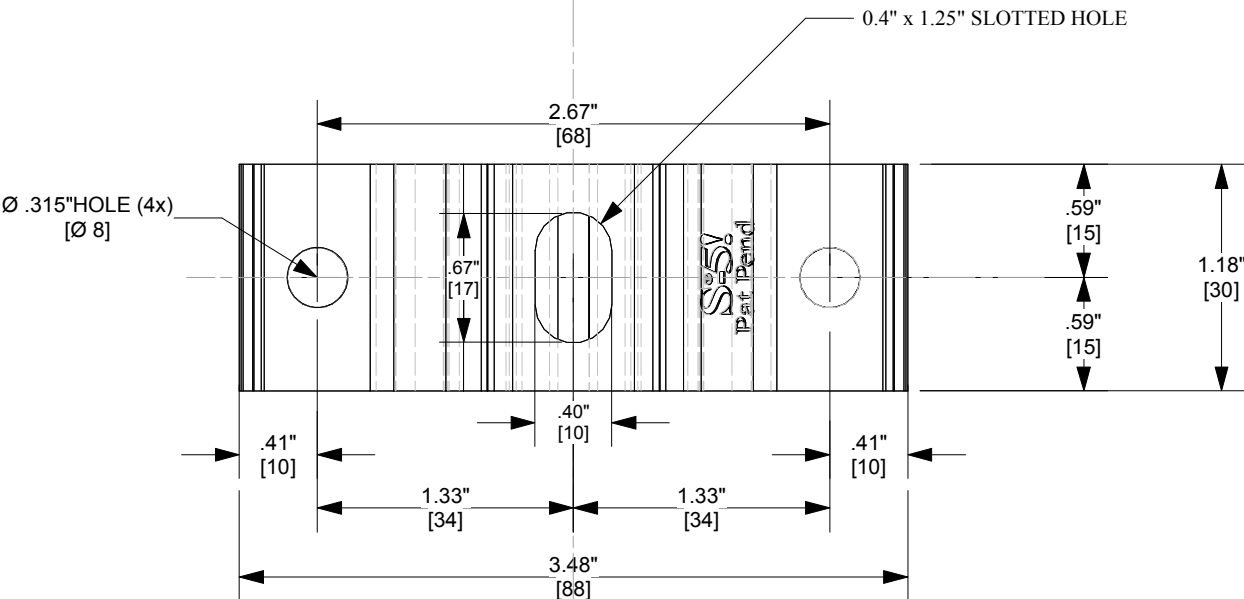
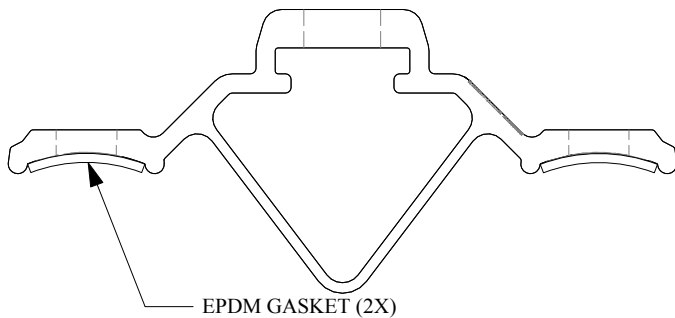


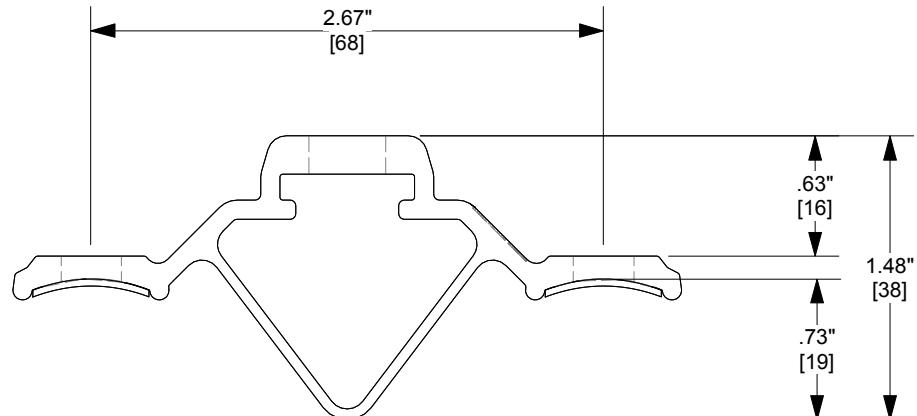
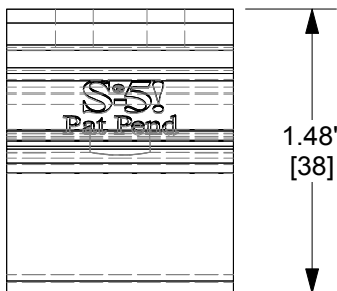
TOP VIEW



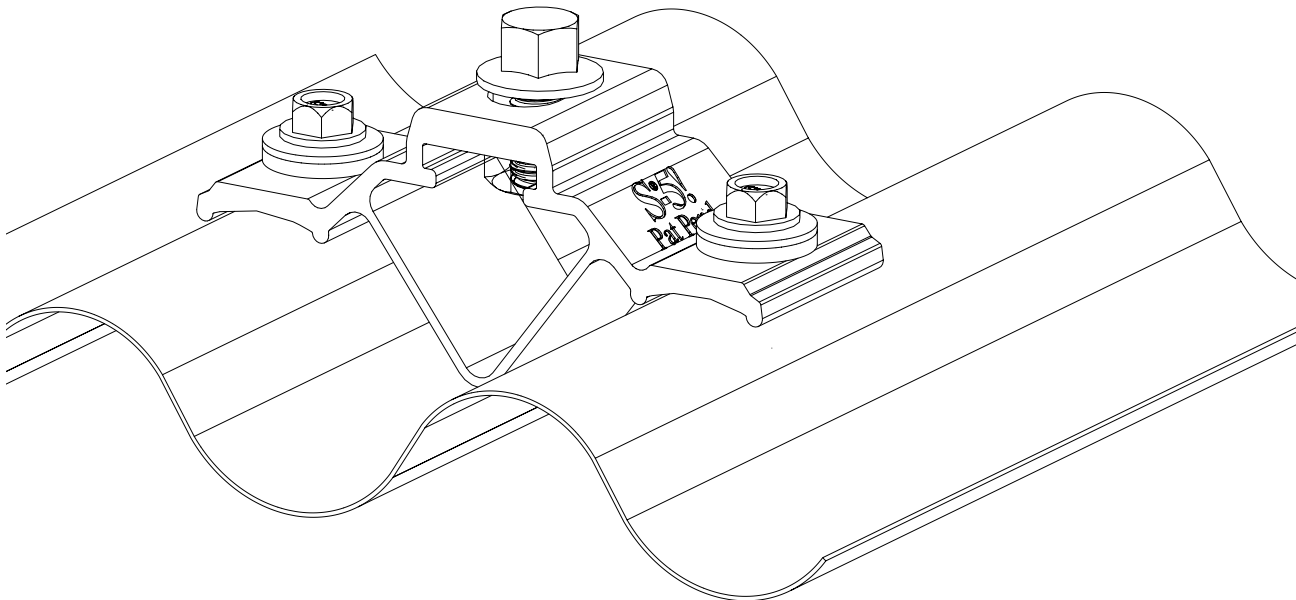
END VIEW



SIDE VIEW

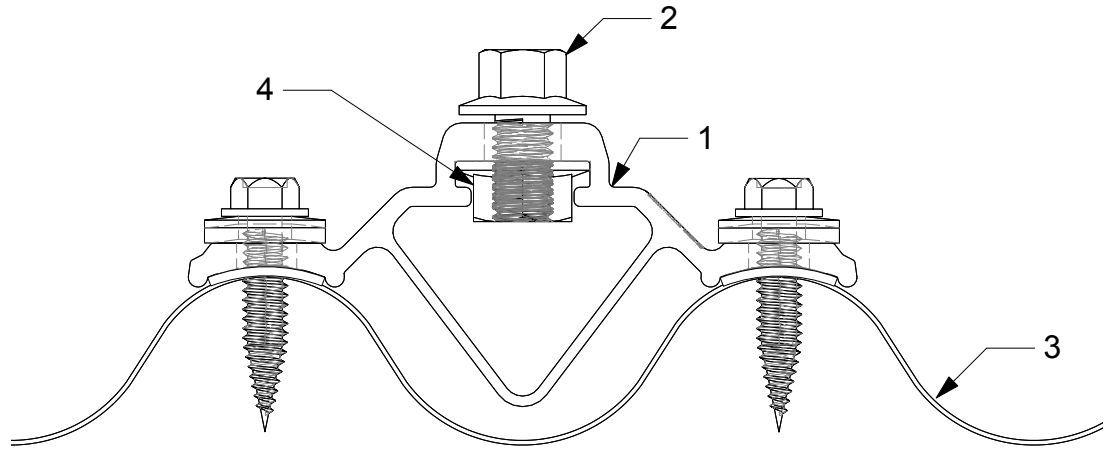



SCALE: 1:1



General Notes

1. CorruBracket™ 100T Mini
2. M8-1.25 BOLT
3. PANEL SAMPLE
4. M8 HEX FLANGE NUT



|                                     |  |                  |                    |
|-------------------------------------|--|------------------|--------------------|
| MATERIAL:<br><b>6000 SERIES AL</b>  |  <div>METAL ROOF INNOVATIONS, LTD.<br/>8655 TABLE BUTTE RD<br/>COLORADO SPRINGS, CO 80908<br/>719-495-0518<br/>719-495-0045 (FAX)</div>   |                  |                    |
|                                     |  |                  |                    |
|                                     | TITLE<br>S-5! CorruBracket™ 100T Mini  |                  |                    |
|                                     | DRAWING NO.<br>USCBTF46-A-1-A_CCD  | DRAWN BY<br>DMMH | DATE<br>07/24/2014 |
| EST ASSEMBLY WEIGHT :<br>0.2375 LBS | S-5!® PRODUCTS ARE PROTECTED BY MULTIPLE U.S. PATENTS INCLUDING 5,228,248, 5,983,588 AND 6,164,033 (OTHERS ISSUED AND PENDING). EUROPEAN PATENTS ARE ALSO APPLIED FOR AND PENDING UNDER THE PATENT COOPERATION TREATY WITH DIVISIONAL FILING RIGHTS RETAINED. METAL ROOF INNOVATIONS, LTD. (LICENSOR OF S-5!® TECHNOLOGY) AGGRESSIVELY PROSECUTES PATENT INFRINGEMENT. |                  |                    |
| SUPPLIED HARDWARE:                  |  |                  |                    |
| SCALE:<br>FULL                      |  |                  |                    |
| OTHER:                              |  |                  |                    |