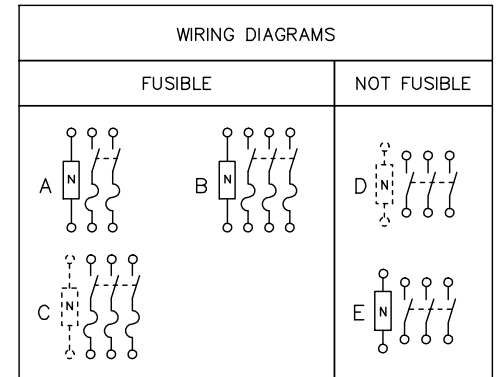


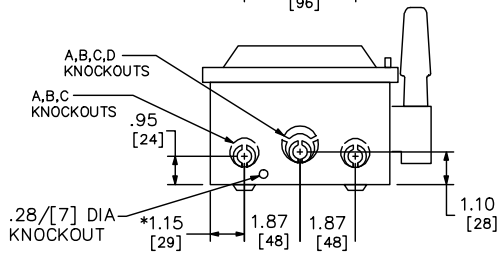
NEMA TYPE 3R

SEISMIC NOTES:
 USE (3) 1/4" DIA GRADE 5 STEEL MOUNTING BOLTS @ HOLES AA
 MAX CONFIGURED WEIGHT 8 LB FOR THE PURPOSE OF DETERMINING
 SEISMIC ANCHORAGE REQUIREMENTS. FOR ALL OTHER APPLICATIONS,
 CONTACT SQUARE D COMPANY.



TERMINAL LUGS			
AMPERES	MAX WIRE	MIN WIRE	TYPE
30	#6 AWG	#14 AWG	AL OR CU

SYMBOL	KNOCKOUTS			
	CONDUIT SIZE		DIAMETER	
	IN	MM	IN	MM
A	.50	13	.88	22
B	.75	19	1.13	29
C	1.00	25	1.38	35
D	1.25	32	1.75	44



*DIMENSIONS TO BOX (NOT COVER)

CATALOG NUMBER	VOLTAGE RATINGS	AMPERAGE RATINGS	WIRING DIAG	HORSEPOWER RATINGS															
				240VAC				480VAC				600VAC							
				STD		MAX		STD		MAX		STD		MAX					
				1Ø	3Ø	1Ø	3Ø	1Ø	3Ø	1Ø	3Ø	1Ø	3Ø	1Ø	3Ø				
H221NRB	240VAC,250VDC	30	A	1 1/2●	3‡	3●	7 1/2‡	-	-	-	-	-	-	-	5●	-	-	-	
H321NRB	240VAC,250VDC	30	B	1 1/2▲	3‡	3▲	7 1/2‡	-	-	-	-	-	-	-	5▲	-	-	-	
H361NRB	600VAC,600VDC	30	B	-	-	-	-	3▲	5‡	7 1/2▲	15‡	-	7 1/2	-	20	5▲	-	10▲ 15▲	
H361RB	600VAC,600VDC	30	C	-	-	-	-	3▲	5■	7 1/2▲	15■	-	7 1/2	-	20	5▲	-	10▲ 15▲	
HU361RB	600VAC,600VDC	30	D	-	-	5▲	10■	-	-	7 1/2▲	20■	-	-	10▲	30	-	5▲	-	15▲
HU361RBEI	600VAC,600VDC	30	D	-	-	5▲	10■	-	-	7 1/2▲	20■	-	-	10▲	30	-	5▲	-	15▲
HU361NRB	600VAC,600VDC	30	E	-	-	5▲	10‡	-	-	7 1/2▲	20‡	-	-	10▲	30	-	5▲	-	15▲

NOTES:
 UL LISTED - E2875
 FINISH - GRAY BAKED ENAMEL
 ALL NEUTRALS - INSULATED
 WHEN MOUNTING THESE SWITCHES, ALLOW 3.00/[76] MIN CLEARANCE
 BETWEEN ENCLOSURES FOR OPENING OF SIDE HINGED DOOR.

- ▲ USE BOTH OUTER SWITCHING POLES
- USE BOTH SWITCHING POLES
- IF CORNER GROUNDED DELTA, INSTALL NEUTRAL AND USE OUTER SWITCHING POLES FOR UNGROUNDED CONDUCTORS.
- ‡ FOR CORNER GROUNDED DELTA ONLY, USE OUTER SWITCHING POLES FOR UNGROUNDED CONDUCTORS.

HEAVY DUTY SAFETY SWITCHES - SEISMIC
 VISIBLE BLADE TYPE
 30 AMPERE
 ENCLOSURE - NEMA TYPE 3R RAINPROOF



DWG# 2229S
 NO.