



EI Automatic Transfer Switch (ATS) 50A, 200A, 200A w/generator support

The Tigo ATS is a required component for a Tigo EI Residential Solar Solution grid-tied energy storage solution (ESS). When the ATS detects a loss of grid power, it quickly and safely switches to solar/battery/generator power only. It then restores normal grid-tied operations when power returns.

Benefits

- Enables automated whole-home or essential-load backup
- Supports increased backup power and duration by connecting a home generator (TSS-200-US-G)
- Provides comprehensive monitoring data with the Tigo EI mobile app and portal
- Reduces main panel upgrades and derating with integrated service disconnects (200A models)

Features

- 120V_{AC} and 240V_{AC} split-phase output
- Manual bypass switch
- NEMA 4X/IP65 enclosure – dust/watertight
- Main circuit breaker (200A) and main lug only (50A) panelboards
- Pure sine wave generator support – up to 24kW with 2-wire start (TSS-200-US-G)

Models

Description	Name	Part Number
50A ATS main lug only (MLO)	TSS-50-US	604-00050-00
200A ATS main circuit breaker (MCB)	TSS-200-US	801-200200-0201
200A ATS MCB w/generator support	TSS-200-US-G	801-200200-0301

Physical Specifications

	TSS-50-US	TSS-200-US/TSS-200-US-G
Height/width/depth	18.9/10.8/4.1in 480/275/105mm	17.91/21.65/9.65in 455/550/245mm
Weight	34.3lbs./15.6kg	65lbs./29.5kg
Operating temperature	-13 – 122°F -25 – 50°C	-40 – 122°F -25 – 50°C
Operating humidity	Up to 100%	
Maximum elevation	9842ft/3000m	
Noise	<25dB	<35dB

Certifications



- TSS-50-US – UL 1741, CSA C22.2 No. 107.1
- TSS-200-US/G – UL 1741, UL 869A, CSA 22.2 No. 107.1, CSA 22.2 No. 0.19

Resources



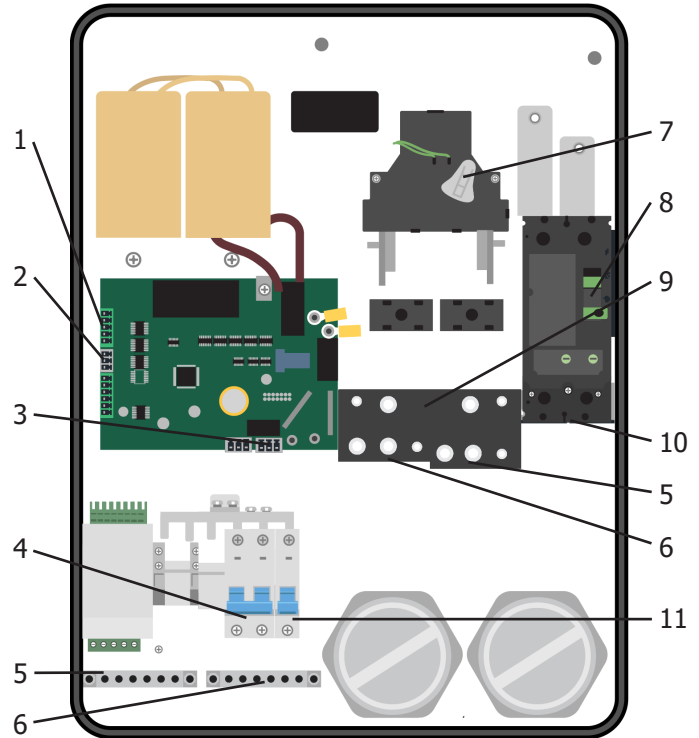
Tigo Energy, Inc.
655 Campbell Technology Pkwy.
Campbell, CA 95008

+1 408 402 0802
[Help Center](#)

Specifications	TSS-50-US	TSS-200-US/G
Inverter Input		
# of inverter inputs	1	
Nominal voltage	240V	
Nominal frequency	50/60Hz	
Maximum power	11400W	
Maximum continuous current	48A	
Rated AC power from backup	10,000W	11,400W
Maximum AC power from backup	11,400W	
Rated continuous current from backup	42A	48A
Maximum AC current from backup	48A	
AC circuit breaker	No	60A
Grid		
Nominal voltage	240V	
Operating voltage range (L-L)	180-270V	
Nominal frequency	50/60Hz	
AC frequency range	45-65Hz	
Maximum power	12,000VA	48,000VA
Maximum continuous input current	48A	160A
Maximum input current	48A	200A
Grid to inverter switchover time	<2s	<500ms
Output (single phase)		
Rated power (L-L)	10,000VA	
Rated power (L-N)	5,000VA	
Output voltage	120/240V _{AC}	
Maximum continuous current (L-N)	25A@120V _{AC}	
Maximum continuous current (L-L)	48A@240V _{AC}	
Imbalance compensation during backup	3000W	
General		
Cooling	Natural convection	
Ingress protection	NEMA 4X (IP65)	
Installation	Wall mount	
Warranty	10 Years	
Manual control bypass switch	No	Yes
Communications	No	RS-485
Energy meter inport/export	No	±1% accuracy
Noise	<25dB	<35dB

Generator Support*	TSS-200-US-G only
Maximum rated AC power	24,000W
Maximum continuous input current	100A
Nominal voltage	240V
Operating voltage range (L-L)	180-270V
Nominal frequency	60Hz
Operating frequency range	45-65Hz
Operating frequency range during battery charging	55-65Hz
Dry contact switch voltage rating	250V _{AC}
Dry contact switch current rating	5A
2-wire start	Yes
Off-grid to generator switchover time	<500ms
Generator to off-grid switchover time	<600ms

EI ATS 200A with Generator Support (TSS-200-US-G)



- 1 – Inverter communications terminals
- 2 – Manual bypass jumper
- 3 – Generator start signal terminals
- 4 – Inverter AC terminals
- 5 – Neutral busbar
- 6 – Ground busbar
- 7 – Manual bypass switch
- 8 – 200A service disconnect
- 9 – Generator and load terminals
- 10 – Grid terminals
- 11 – Generator starter battery charger terminal

- * Generator requirements:
- Pure sine wave output.
 - A two-wire start signal circuit.
 - Capacity ≥ inverter wattage (maximum 24,000kW).